

CSRO

CELEBRATING 20 YEARS

BUSINESS OF RHEUMATOLOGY

APPs and the Workforce

October 4, 2023

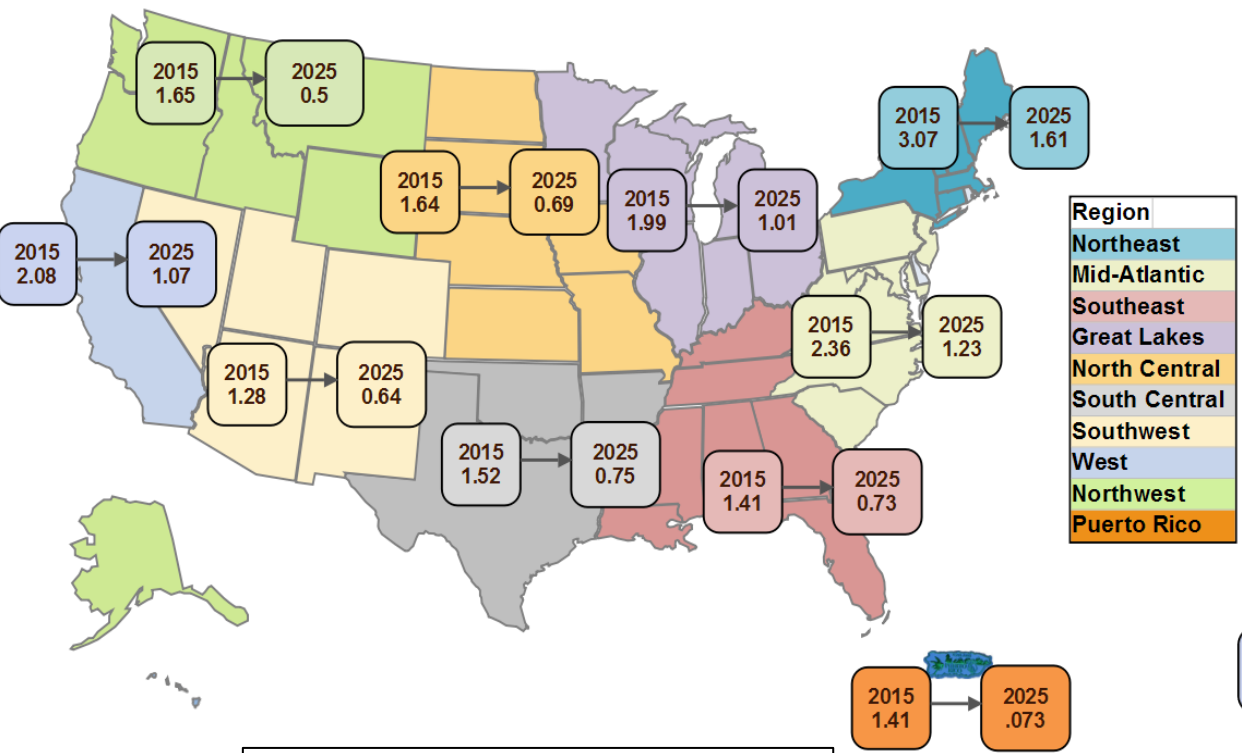
CSRO

CELEBRATING 20 YEARS

BUSINESS OF RHEUMATOLOGY

The following information provided by the American College of Rheumatology (ACR).

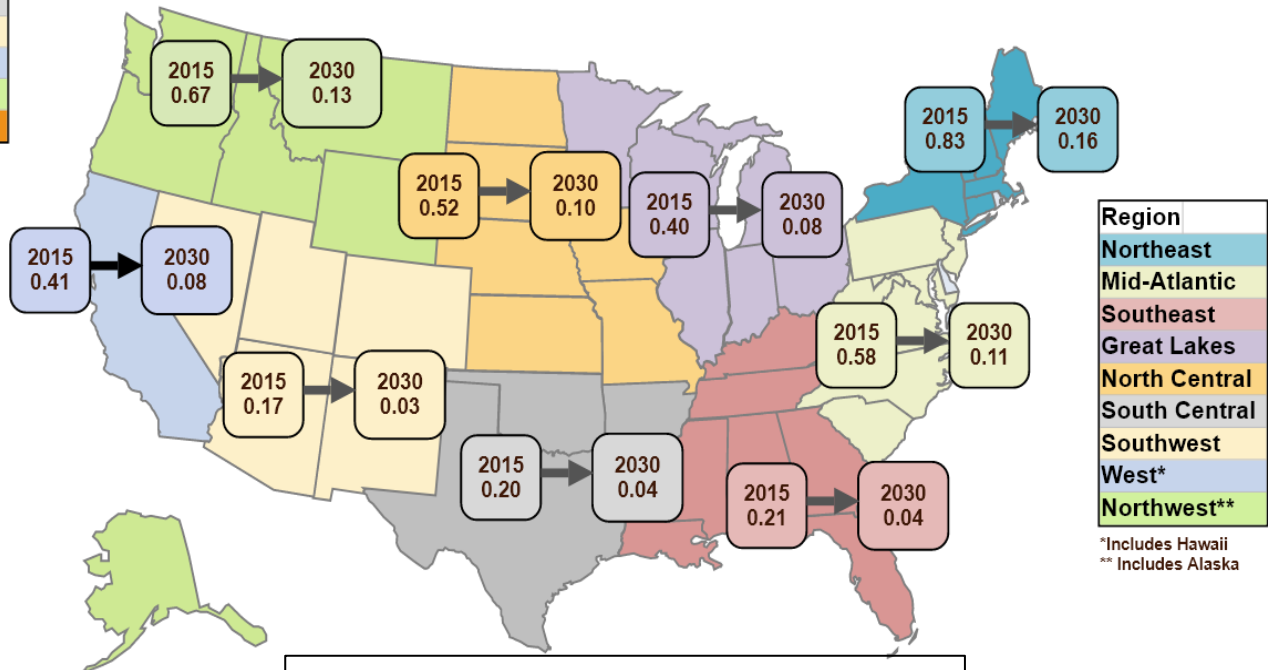
Rheumatology Geographic Maldistribution



Adult Rheumatology

2015 Adult Rheumatologists versus 2025 Projected Supply per 100,000 Population

- Battafarano DF, et al: 2015 ACR Adult Workforce Study. AC&R 2018, 70:617-626. PMID: 29400009
- Correll CK, et al. 2015 Peds Workforce Study. AC&R 2022:74:340-348. PMID 33107674



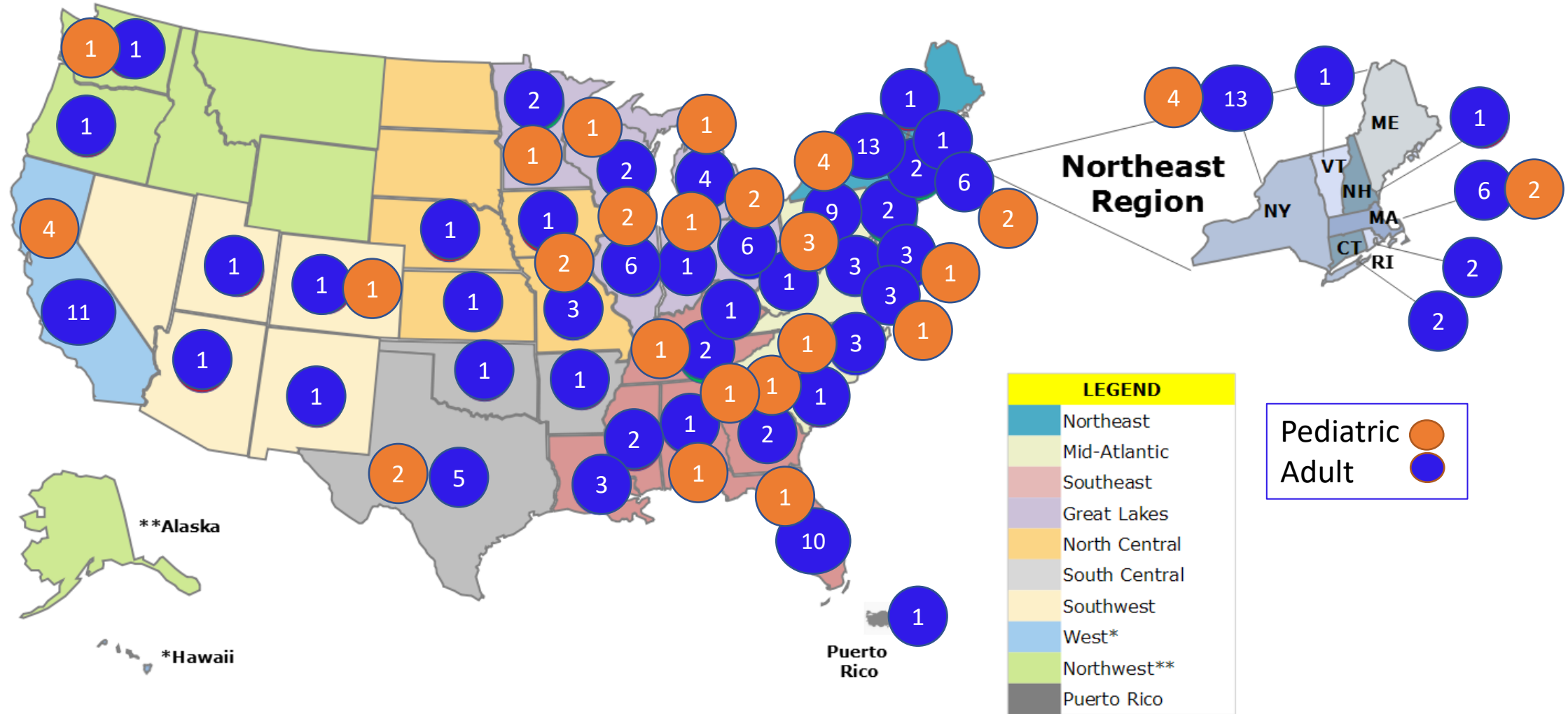
Pediatric Rheumatology

2015 Pediatric Rheumatologists versus 2030 Projected Supply per 100,000 Population

Region
 Northeast
 Mid-Atlantic
 Southeast
 Great Lakes
 North Central
 South Central
 Southwest
 West*
 Northwest**

*Includes Hawaii
 ** Includes Alaska

Rheumatology Fellowship Program *Maldistribution*



Slide Numbers Based on ACGME programs in 2022

Fellowship Training 2015-2021

❖ **Adult Rheumatology Fellows:**

- **15% growth** between 2015 (443 fellows) and 2021 (521 fellows)

<u>Match Data:</u>	Applicants	Matched	<i>Did Not Match</i>
2019-2020	335	242	94
2020-2021	338	246	84

Adult Rheum Fellowship is now as competitive as GI and Cardiology

❖ **Pediatric Rheumatology Fellows:**

- **22% growth** between 2015 (79 fellows) and 2021 (102 fellows)

<u>Match Data:</u>	Applicants	Matched	<i>Did Not Match</i>
2019-2020	32	29	3
2020-2021	28	25	3

Peds Rheum challenges include small # fellows, low salaries, 3-yr mandate for training, etc

ACR Rheumatology Workforce Initiatives (2015-2020)

- **Define Workforce Shortages**
 - (2015 ACR Workforce Study)
- **Train more Adult & Pediatric Fellows**
- **Train more Allied Rheumatology Professionals**

- **Train PCPs** to extend rheumatology care (adult and peds)
 - Example: Rheum TeleECHO project in New Mexico
- **Geographic maldistribution strategies** and stakeholders
 - Integrate strategies in one or more underserved areas in the US

ACR Workforce *Dual* Challenge

Training and Sustaining the Workforce

Train Workforce

- Train and support adult and pediatric fellowships.
- Recruit and Train Rheum APPs
- Create/Train multidisciplinary teams.
 - PCPs, NPs, PAs, PTs, OTs, PharmDs
- Ensure and promote rheumatology to residents, medical students and graduate students.

Sustain Workforce

- Identify community partners
- Partner with academic/research community
- Advocate for innovative training opportunities with ACGME and ABP
- Collaborate with sister societies and Pharma to coordinate and fund strategies
- Establish relationships, if possible, with payers based on practice guidelines / ACR metrics

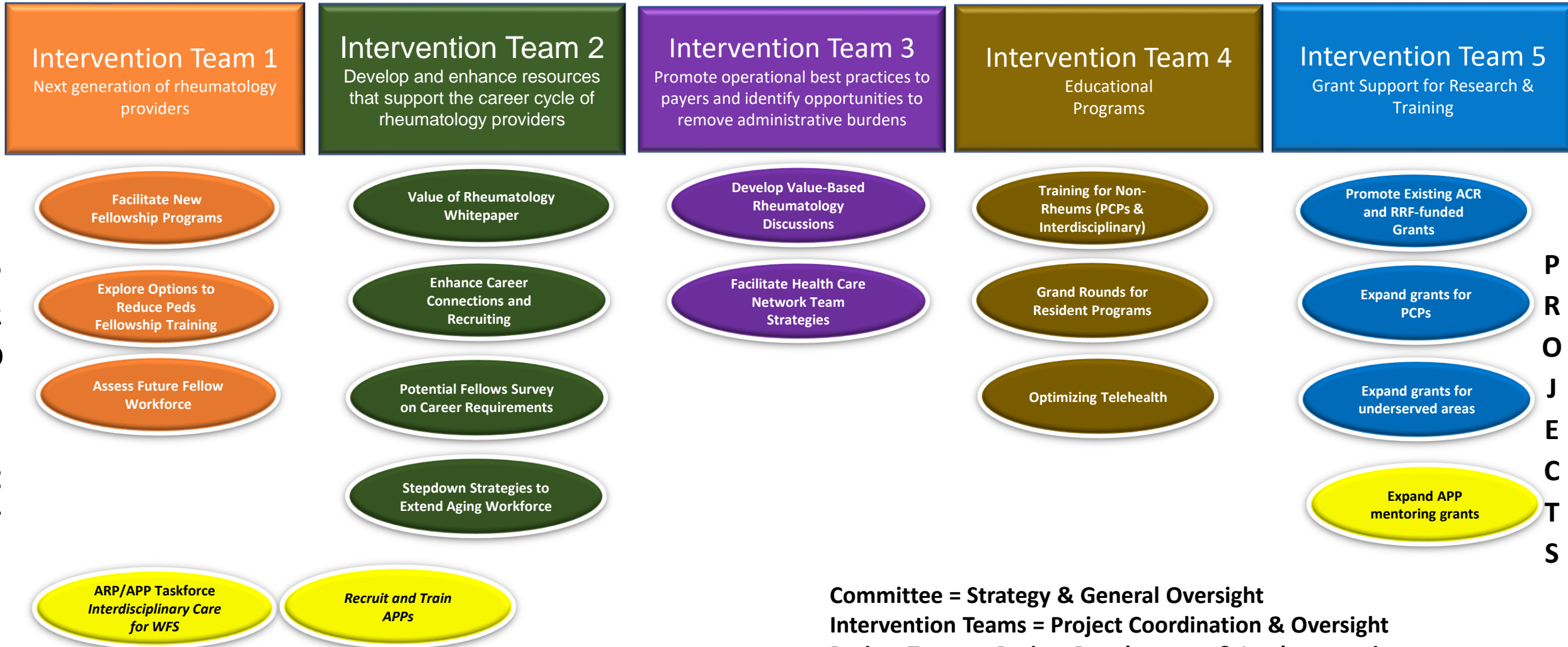
ACR/RRF Investment

Partnerships

Community Investment

Specific ACR Workforce Solutions Team Projects

(Training 1,4,&5; Sustaining Business 2&3)



P
R
O
J
E
C
T
S

P
R
O
J
E
C
T
S

Committee = Strategy & General Oversight
Intervention Teams = Project Coordination & Oversight
Project Teams = Project Development & Implementation

Concept: APP Models for Rheumatology Care

- *Overall APP models are critical for rheumatology care*
 - We are unable to train enough rheumatologists to supply the demand:
 - Keep up with retirements and part-time rheumatologists
 - Manage the aging population
 - Adjust for maldistribution of rheumatology care
- APP rheumatology models vary based on:
 - Private practice vs health care systems
 - Size of practice (more flexibility for APP roles in a large practice)
- APP recruitment into rheumatology is challenging due to:
 - Limited exposure to the rheumatology while in training
 - Need for competitive salaries (with other APP options)
 - Require training and oversight in practice
- Consider rheumatology APPs integrated into the primary care network
 - Enables direct PCP rheumatology support but also bridge care to rheumatologists

Up Next: Business of Rheumatology

- Wednesday, December 6

- 4pm PT / 5pm MT / 6pm CT / 7pm ET

- Stay tuned for details and registration at www.csro.info/conferences/upcoming-events/business-of-rheumatology

Thank you!



A Specialty Networks Company

Celebrating **20 years** of serving as a **voice for the rheumatology community**, working to ensure patients have access to care.



CSRO

CELEBRATING 20 YEARS

WEBSITE

www.csro.info

EMAIL

info@csro.info

PHONE

414.918.9825